

## Test Report

No. : CE/2016/A4177

Date : 2016/11/01

Page : 1 of 7

CHUNG TAI SING CHEMICAL INDUSTRY CO., LTD.  
105 NIU PU SOUTH ROAD, HSINCHU, TAIWAN, R. O. C.



The following samples was/were submitted and identified by/on behalf of the applicant as :

Sample Submitted By : CHUNG TAI SING CHEMICAL INDUSTRY CO., LTD.  
Sample Description : PUFF DINO DRY FILM LUBRICANT  
Style/Item No. : DA193  
Sample Receiving Date : 2016/10/26  
Testing Period : 2016/10/26 TO 2016/11/01

### Test Requested :

- (1) As specified by client, with reference to RoHS 2011/65/EU Annex II and amending Directive (EU) 2015/863 to determine Cadmium, Lead, Mercury, Cr(VI), PBBs, PBDEs, DBP, BBP, DEHP, DIBP contents in the submitted sample.
- (2) Please refer to next pages for the other item(s).

Test Result(s) : Please refer to next page(s).

  
Troy Chang, Manager - Tech  
Signed for and on behalf of  
SGS TAIWAN LTD.  
Chemical Laboratory - Taipei



This document is issued by the Company subject to its General Conditions of Service printed overleaf, available on request or accessible at <http://www.sgs.com/en/Terms-and-Conditions.aspx> and, for electronic format documents, subject to Terms and Conditions for Electronic Documents at <http://www.sgs.com/en/Terms-and-Conditions/Termse-Document.aspx>. Attention is drawn to the limitation of liability, indemnification and jurisdiction issues defined therein. Any holder of this document is advised that information contained hereon reflects the Company's findings at the time of its intervention only and within the limits of client's instruction, if any. The Company's sole responsibility is to its Client and this document does not exonerate parties to a transaction from exercising all their rights and obligations under the transaction documents. This document cannot be reproduced, except in full, without prior written approval of the Company. Any unauthorized alteration, forgery or falsification of the content or appearance of this document is unlawful and offenders may be prosecuted to the fullest extent of the law. Unless otherwise stated the results shown in this test report refer only to the sample(s) tested.

# Test Report

No. : CE/2016/A4177

Date : 2016/11/01

Page : 2 of 7

CHUNG TAI SING CHEMICAL INDUSTRY CO., LTD.  
105 NIU PU SOUTH ROAD, HSINCHU, TAIWAN, R. O. C.



## Test Result(s)

PART NAME No.1 : WHITE LIQUID

Test Item(s)	Unit	Method	MDL	Result No.1
Cadmium (Cd)	mg/kg	With reference to IEC 62321-5 (2013) and performed by ICP-AES.	2	n.d.
Lead (Pb)	mg/kg	With reference to IEC 62321-5 (2013) and performed by ICP-AES.	2	n.d.
Mercury (Hg)	mg/kg	With reference to IEC 62321-4 (2013) and performed by ICP-AES.	2	n.d.
Hexavalent Chromium Cr(VI)	mg/kg	With reference to IEC 62321 (2008) and performed by UV-VIS.	2	n.d.
<b>Sum of PBBs</b>	mg/kg	With reference to IEC 62321-6 (2015) and performed by GC/MS.	-	n.d.
Monobromobiphenyl	mg/kg		5	n.d.
Dibromobiphenyl	mg/kg		5	n.d.
Tribromobiphenyl	mg/kg		5	n.d.
Tetrabromobiphenyl	mg/kg		5	n.d.
Pentabromobiphenyl	mg/kg		5	n.d.
Hexabromobiphenyl	mg/kg		5	n.d.
Heptabromobiphenyl	mg/kg		5	n.d.
Octabromobiphenyl	mg/kg		5	n.d.
Nonabromobiphenyl	mg/kg		5	n.d.
Decabromobiphenyl	mg/kg		5	n.d.
<b>Sum of PBDEs</b>	mg/kg		-	n.d.
Monobromodiphenyl ether	mg/kg		5	n.d.
Dibromodiphenyl ether	mg/kg		5	n.d.
Tribromodiphenyl ether	mg/kg		5	n.d.
Tetrabromodiphenyl ether	mg/kg		5	n.d.
Pentabromodiphenyl ether	mg/kg		5	n.d.
Hexabromodiphenyl ether	mg/kg		5	n.d.
Heptabromodiphenyl ether	mg/kg		5	n.d.
Octabromodiphenyl ether	mg/kg		5	n.d.
Nonabromodiphenyl ether	mg/kg		5	n.d.
Decabromodiphenyl ether	mg/kg		5	n.d.

This document is issued by the Company subject to its General Conditions of Service printed overleaf, available on request or accessible at <http://www.sgs.com/en/Terms-and-Conditions.aspx> and, for electronic format documents, subject to Terms and Conditions for Electronic Documents at <http://www.sgs.com/en/Terms-and-Conditions/Termse-Document.aspx>. Attention is drawn to the limitation of liability, indemnification and jurisdiction issues defined therein. Any holder of this document is advised that information contained hereon reflects the Company's findings at the time of its intervention only and within the limits of client's instruction, if any. The Company's sole responsibility is to its Client and this document does not exonerate parties to a transaction from exercising all their rights and obligations under the transaction documents. This document cannot be reproduced, except in full, without prior written approval of the Company. Any unauthorized alteration, forgery or falsification of the content or appearance of this document is unlawful and offenders may be prosecuted to the fullest extent of the law. Unless otherwise stated the results shown in this test report refer only to the sample(s) tested.

# Test Report

No. : CE/2016/A4177

Date : 2016/11/01

Page : 3 of 7

CHUNG TAI SING CHEMICAL INDUSTRY CO., LTD.  
105 NIU PU SOUTH ROAD, HSINCHU, TAIWAN, R. O. C.



Test Item(s)	Unit	Method	MDL	Result
				No.1
BBP (Butyl Benzyl phthalate) (CAS No.: 85-68-7)	mg/kg	With reference to IEC 62321-8/CD (2013). Analysis was performed by GC/MS.	50	n.d.
DBP (Dibutyl phthalate) (CAS No.: 84-74-2)	mg/kg		50	n.d.
DEHP (Di- (2-ethylhexyl) phthalate) (CAS No.: 117-81-7)	mg/kg		50	n.d.
DIBP (Di-isobutyl phthalate) (CAS No.: 84-69-5)	mg/kg		50	n.d.
DIDP (Di-isodecyl phthalate) (CAS No.: 26761-40-0; 68515-49- 1)	mg/kg		50	n.d.
DINP (Di-isononyl phthalate) (CAS No.: 28553-12-0; 68515-48- 0)	mg/kg		50	n.d.
DNOP (Di-n-octyl phthalate) (CAS No.: 117-84-0)	mg/kg		50	n.d.

## Note :

1. mg/kg = ppm ; 0.1wt% = 1000ppm
2. MDL = Method Detection Limit
3. n.d. = Not Detected = less than MDL
4. " - " = Not Regulated

## Test Report

No. : CE/2016/A4177

Date : 2016/11/01

Page : 4 of 7

CHUNG TAI SING CHEMICAL INDUSTRY CO., LTD.  
105 NIU PU SOUTH ROAD, HSINCHU, TAIWAN, R. O. C.

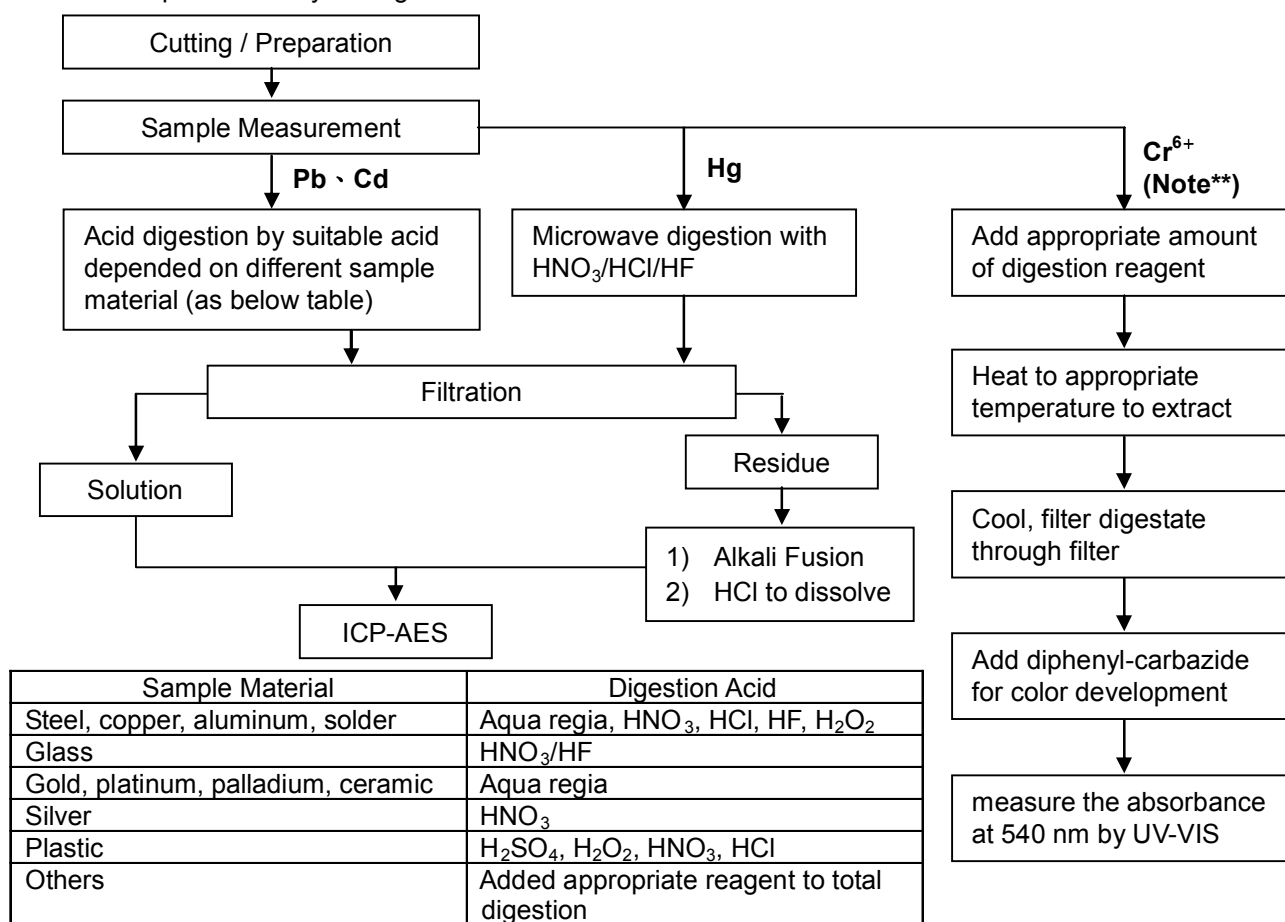


### Analytical flow chart of Heavy Metal

These samples were dissolved totally by pre-conditioning method according to below flow chart.

(Cr<sup>6+</sup> test method excluded)

- Technician: JR Wang
- Supervisor: Troy Chang



#### Note\*\* (For IEC 62321)

- (1) For non-metallic material, add alkaline digestion reagent and heat to 90~95 °C.
- (2) For metallic material, add pure water and heat to boiling.

## Test Report

No. : CE/2016/A4177

Date : 2016/11/01

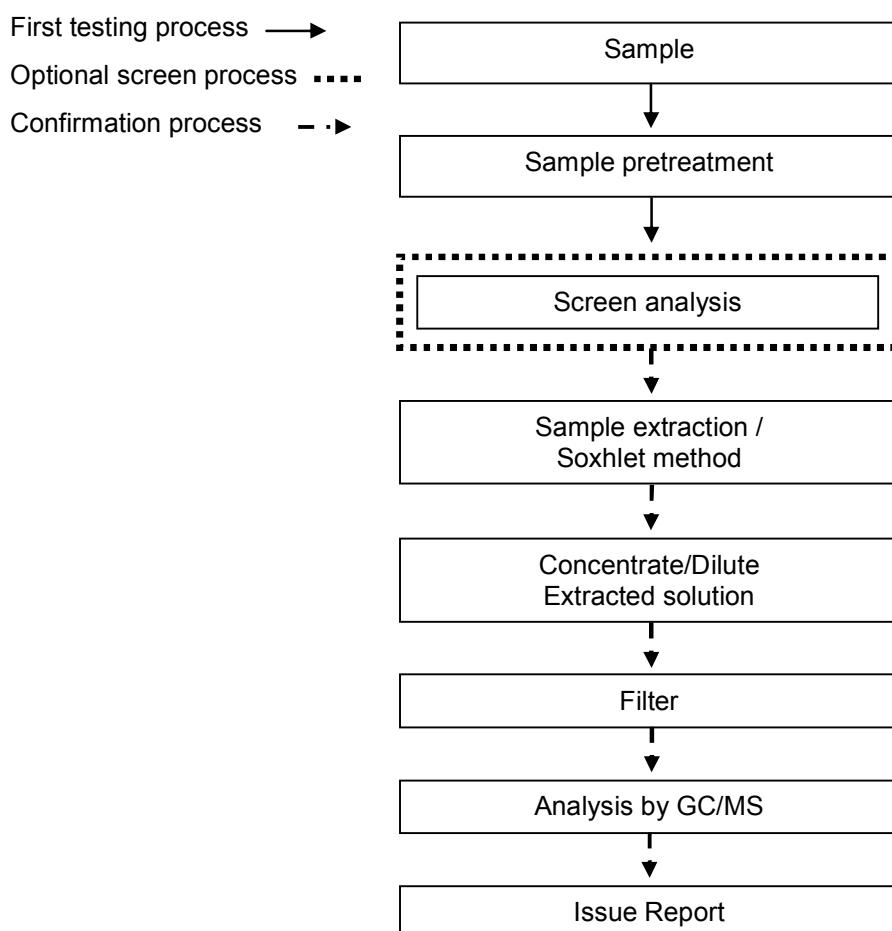
Page : 5 of 7

CHUNG TAI SING CHEMICAL INDUSTRY CO., LTD.  
105 NIU PU SOUTH ROAD, HSINCHU, TAIWAN, R. O. C.



### Analytical flow chart – PBB / PBDE

- Technician : Yaling Tu
- Supervisor: Troy Chang



This document is issued by the Company subject to its General Conditions of Service printed overleaf, available on request or accessible at <http://www.sgs.com/en/Terms-and-Conditions.aspx> and, for electronic format documents, subject to Terms and Conditions for Electronic Documents at <http://www.sgs.com/en/Terms-and-Conditions/Termse-Documents.aspx>. Attention is drawn to the limitation of liability, indemnification and jurisdiction issues defined therein. Any holder of this document is advised that information contained hereon reflects the Company's findings at the time of its intervention only and within the limits of client's instruction, if any. The Company's sole responsibility is to its Client and this document does not exonerate parties to a transaction from exercising all their rights and obligations under the transaction documents. This document cannot be reproduced, except in full, without prior written approval of the Company. Any unauthorized alteration, forgery or falsification of the content or appearance of this document is unlawful and offenders may be prosecuted to the fullest extent of the law. Unless otherwise stated the results shown in this test report refer only to the sample(s) tested.

# Test Report

No. : CE/2016/A4177

Date : 2016/11/01

Page : 6 of 7

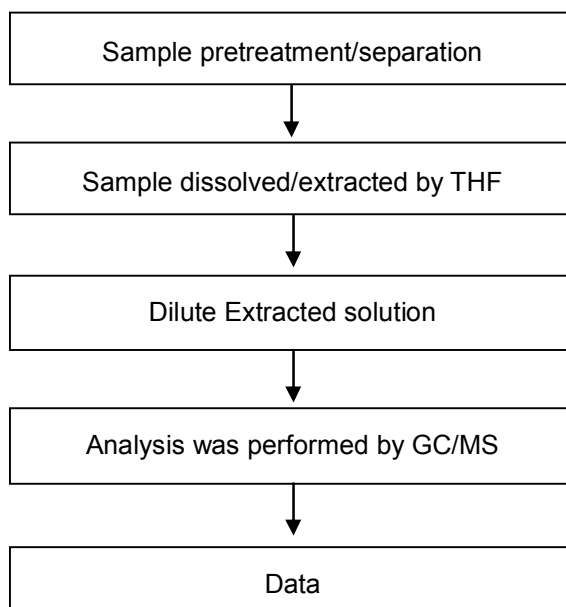
CHUNG TAI SING CHEMICAL INDUSTRY CO., LTD.  
105 NIU PU SOUTH ROAD, HSINCHU, TAIWAN, R. O. C.



## Analytical flow chart - Phthalate

- Technician: Andy Shu
- Supervisor: Troy Chang

**【Test method: IEC 62321-8】**



This document is issued by the Company subject to its General Conditions of Service printed overleaf, available on request or accessible at <http://www.sgs.com/en/Terms-and-Conditions.aspx> and, for electronic format documents, subject to Terms and Conditions for Electronic Documents at <http://www.sgs.com/en/Terms-and-Conditions/Termse-Documents.aspx>. Attention is drawn to the limitation of liability, indemnification and jurisdiction issues defined therein. Any holder of this document is advised that information contained hereon reflects the Company's findings at the time of its intervention only and within the limits of client's instruction, if any. The Company's sole responsibility is to its Client and this document does not exonerate parties to a transaction from exercising all their rights and obligations under the transaction documents. This document cannot be reproduced, except in full, without prior written approval of the Company. Any unauthorized alteration, forgery or falsification of the content or appearance of this document is unlawful and offenders may be prosecuted to the fullest extent of the law. Unless otherwise stated the results shown in this test report refer only to the sample(s) tested.

## Test Report

No. : CE/2016/A4177

Date : 2016/11/01

Page : 7 of 7

CHUNG TAI SING CHEMICAL INDUSTRY CO., LTD.  
105 NIU PU SOUTH ROAD, HSINCHU, TAIWAN, R. O. C.



\* The tested sample / part is marked by an arrow if it's shown on the photo. \*

### CE/2016/A4177



\*\* End of Report \*\*

This document is issued by the Company subject to its General Conditions of Service printed overleaf, available on request or accessible at <http://www.sgs.com/en/Terms-and-Conditions.aspx> and, for electronic format documents, subject to Terms and Conditions for Electronic Documents at <http://www.sgs.com/en/Terms-and-Conditions/Termse-Documents.aspx>. Attention is drawn to the limitation of liability, indemnification and jurisdiction issues defined therein. Any holder of this document is advised that information contained hereon reflects the Company's findings at the time of its intervention only and within the limits of client's instruction, if any. The Company's sole responsibility is to its Client and this document does not exonerate parties to a transaction from exercising all their rights and obligations under the transaction documents. This document cannot be reproduced, except in full, without prior written approval of the Company. Any unauthorized alteration, forgery or falsification of the content or appearance of this document is unlawful and offenders may be prosecuted to the fullest extent of the law. Unless otherwise stated the results shown in this test report refer only to the sample(s) tested.